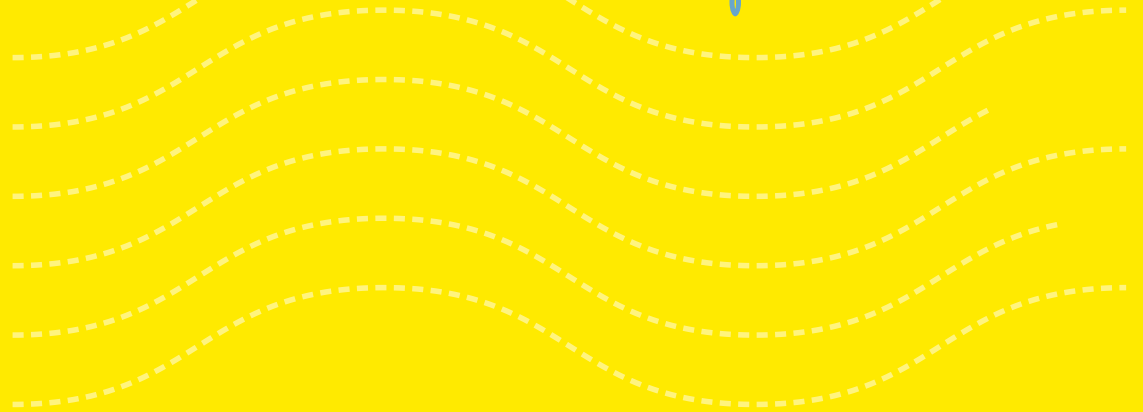


28 Renewable Energy Projects
Funded by MNREM



Cultivating talent, education, and innovation



MNREM is leading the way in Minnesota's renewable energy marketplace: training workers, encouraging job creation, and supporting innovations in the industry and identifying industry workforce needs. The organization has awarded \$3.8 million in grants through the federally funded WIRED (Workforce Innovation in Regional Economic Development) initiative.

The 27-person MNREM leadership board is private-sector-led. The board also includes representatives from the renewable and traditional energy industry, workforce development, education, foundations, economic development, labor, and agricultural research.

Looking forward, MNREM is focused on utilizing local resources to strengthen local economies, generating local energy & jobs, and providing statewide leadership in renewable energy.

FOR MORE INFORMATION, PLEASE VISIT www.mnrem.org.

GRANT FUNDING AREAS

FUNDING AREAS

Skills Training (16 projects)

Career Awareness (10 projects)

Curriculum Development (9 projects)

Entrepreneurship (6 Projects)

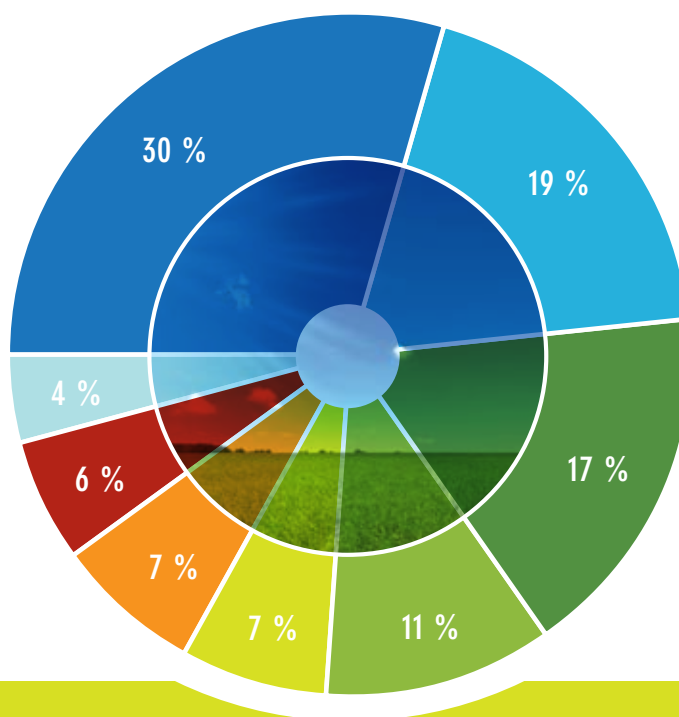
Conservation (4 Projects)

Internships (4 Projects)

Teacher Development (3 Projects)

Leadership Training (2 Projects)

PERCENTAGE OF PROJECTS



Working with more than 100 industry partners, MNREM has funded projects representing many facets of the Green economy in Minnesota including biomass, biofuels, energy efficiency, ethanol, solar, wind, and the supporting industries required for renewable energy and bioscience growth.

More than 8,100 people have participated in MNREM-supported projects. These grants are enabling local businesses, communities, workforce development organizations, economic development, and educational institutions to build renewable energy workers' quality and capacity. The projects are listed on the following pages in alphabetical order according to industry partner.

PARTNERS

PROJECT DESCRIPTION

GRANT AMOUNT & FUNDING AREA

INDUSTRY PARTNERS

- Alliant Energy
- Freeborn-Mower Cooperative Services

OTHER KEY PARTNERS

Workforce Development, Inc., Albert Lea High School, Riverland Community College, Southern MN Initiative Foundation

In four counties in southeastern Minnesota, Energy Academies are being developed by Alliant Energy and Freeborn-Mower Cooperative Services partnering with Riverland College and Workforce Development, Inc. These academies will expose potential workers to the renewable energy field. This partnership will also enhance the renewable energy curriculum for high school students and offer renewable energy internships.

AMOUNT: \$202,500

FUNDING AREA:

Career awareness

Skills training

Internships

Curriculum development

INDUSTRY PARTNERS

- Austin Public Utilities

OTHER KEY PARTNERS

Workforce Development, Inc., Riverland Community College

In Austin, the local public utilities company is working with the local community college to cross-train licensed electricians to install solar equipment in the region. The company is responding to the growing interest in solar energy by both consumers and producers.

AMOUNT: \$90,000

FUNDING AREA:

Curriculum development

Career awareness

Skills training

INDUSTRY PARTNERS

- BH Electronics
- Outland Renewable Energy
- SMI & Hydraulics
- Xcel

OTHER KEY PARTNERS

SW MN FIRST Collaborative, Agricultural Utilization Research Institute, Central MN Jobs & Training Services, Central MN Workforce Investment Board, Department of Employment and Economic Development, iSEEK, Marshall High School, MN Energy Consortium, MN State Colleges and Universities, MN West Community & Technical College, South Central Workforce Council, Southwest/West Central Service Cooperative, SE Workforce Council, SW MN Private Industry Council, SW MN Workforce Council, Workforce Development, Inc.

Across Minnesota, the Career Awareness for Renewable Energy (CARE) outreach project uses online tools such as websites and an electronic magazine to stimulate interest in renewable energy careers. Other outreach activities include career fairs, student competitions, and tuition reimbursement for renewable energy training.

AMOUNT: \$202,500

FUNDING AREA:

Career awareness

Skills training

INDUSTRY PARTNERS

- BTD Manufacturing
- Lake Region Electrical Cooperative
- Otter Tail Power Company

OTHER KEY PARTNERS

MN State Community & Technical College, Adult Basic Education–Moorhead, Perham/Dent ISD# 549, Lake Park/Auburn ISD# 2889, Hawley ISD# 150, Detroit Lakes ISD# 22, Moorhead ISD# 152, Dilworth/Glyndon/Felton ISD# 2164, Rural Minnesota Concentrated Employment Program (Rural MN CEP)

Six independent school districts in northwestern Minnesota will benefit from Green technology curriculum developed by Minnesota State Community & Technical College faculty, assisted by private sector partners. These units will also improve the college's existing engine-related, construction/design, and electrical programs at its campuses in Detroit Lakes, Fergus Falls, Moorhead, and Wadena. Green technology specialists from BTD Manufacturing, Lake Region Electrical Coop, and Otter Tail Power company are assisting in course development.

AMOUNT: \$202,500

FUNDING AREA:

Curriculum development

Career awareness

Skills training

INDUSTRY PARTNERS

- Chippewa Valley Ethanol Company (CVEC)

OTHER KEY PARTNERS

Benson Public Schools, Benson Economic Development Authority, L. A. Amundson Foundation, SW MN Private Industry Council and Workforce Council

In Benson, the public school has installed bench-top lab equipment that explores different methods of ethanol generation. CVEC has assisted in setting up the lab and developing the curriculum. Students enrolled in Benson High School's Renewable Energy class are eligible to apply for an internship at the CVEC through Benson High School's Off-Campus Work-Site Program.

AMOUNT: \$72,525

FUNDING AREA:

Entrepreneurship

Internships

Curriculum development

Career awareness

PARTNERS	PROJECT DESCRIPTION	GRANT AMOUNT & FUNDING AREA
<p>INDUSTRY PARTNERS</p> <ul style="list-style-type: none"> • Dakota Wind • Energy Maintenance Service • Outland Renewable Energy • SMI & Hydraulics <p>OTHER KEY PARTNERS</p> <p>MN West Community & Technical College, Canby Economic Development Authority, Canby Public Schools, City of Canby, SW MN Workforce Council, Yellow Medicine County Business Retention and Expansion Initiative</p>	<p>In the Canby, Granite Falls, Jackson, Pipestone, and Worthington areas, a Wind Energy Development Coordinator (representing MN West Community & Technical College) is developing a network that connects local businesses and schools on the subject of wind energy. She is also recruiting students for the college's Wind Energy program, promoting online wind energy courses, and creating a jobs database for employee recruiting.</p>	<p>AMOUNT: \$100,000</p> <p>FUNDING AREA:</p> <p>Entrepreneurship</p>
<p>INDUSTRY PARTNERS</p> <ul style="list-style-type: none"> • Dotson Iron Castings <p>OTHER KEY PARTNERS</p> <p>MN State University–Mankato, The BioBusiness Alliance of MN, Center for Rural Policy and Development, South Central College, South Central Workforce Council, Southern MN Initiative Foundation</p>	<p>In the Mankato area, new renewable energy entrepreneurs and ventures will be invited to participate in entrepreneurial teams developed by the partners. Participants will benefit from education, networking, collaborating, and mentoring. The project was instigated by a 133-year-old local foundry and the local university and community/technical college to jump-start new ideas and products that will be manufactured in Minnesota.</p>	<p>AMOUNT: \$61,000</p> <p>FUNDING AREA:</p> <p>Entrepreneurship</p>
<p>INDUSTRY PARTNERS</p> <ul style="list-style-type: none"> • Easy Energy Systems <p>OTHER KEY PARTNERS</p> <p>Martin County West Public Schools, South Central Workforce Council</p>	<p>In the Welcome area, a manufacturer of modular ethanol production systems is providing internships and training for local students interested in employment in the renewable energy industry. Students experiment with different base sources for ethanol production, assist in module manufacturing, research global applications, and develop marketing plans and materials.</p>	<p>AMOUNT: \$85,935</p> <p>FUNDING AREA:</p> <p>Entrepreneurship</p> <p>Internships</p>
<p>INDUSTRY PARTNERS</p> <ul style="list-style-type: none"> • Empire Plumbing and Heating • SMI & Hydraulics • Solar Skies • 20+ more industry partners <p>OTHER KEY PARTNERS</p> <p>SW Initiative Foundation, Central MN Jobs & Training, MN Department of Employment & Economic Development, MN West Community & Technical College, Prairie Woods Environmental Learning Center, Ridgewater College, Southwest/West Central Service Cooperative, SW MN Private Industry Council, high schools throughout the region</p>	<p>In 23 counties in southwest and west central Minnesota, renewable energy professionals from Empire Plumbing & Heating, SMI & Hydraulics (a wind tower manufacturer), Solar Skies (a manufacturer of solar thermal products), and a variety of other businesses are collaborating with schools and community partners to provide coaching to 22 teams of teenagers competing in the YES! Youth Energy Summit.</p>	<p>AMOUNT: \$202,500</p> <p>FUNDING AREA:</p> <p>Entrepreneurship</p> <p>Career awareness</p>
<p>INDUSTRY PARTNERS</p> <ul style="list-style-type: none"> • Gausmen & Moore Mechanical and Electrical Engineers • Luminare Eternus • Paulsen Architects • Schwickerts • Wilson Construction <p>OTHER KEY PARTNERS</p> <p>MN State University–Mankato, South Central Workforce Council</p>	<p>In the Mankato area, local architects, construction, and contracting companies are working with the local university to train workers in designing and implementing energy-efficient heating and air conditioning for public and private buildings. This includes training on mechanical systems for new buildings and for retrofitting existing buildings.</p>	<p>AMOUNT: \$127,862</p> <p>FUNDING AREA:</p> <p>Conservation</p> <p>Skills training</p>

PARTNERS	PROJECT DESCRIPTION	GRANT AMOUNT & FUNDING AREA
<p>INDUSTRY PARTNERS</p> <ul style="list-style-type: none"> Granite Falls Energy Fagan Engineering Outland Renewable Energy <p>OTHER KEY PARTNERS</p> <p>MN West Community & Technical College, Communities for Responsible Energy/Environment Demonstration Project (CREED), MN Future Farmers of America, Southwest MN State University, Southwest/West Central and MN Valley Service Cooperatives, SW MN Workforce Council</p>	<p>In Granite Falls and Marshall, CREED (Communities for Responsible Energy/Environment Demonstration Project) is providing hands-on training to high school teachers from southwest Minnesota in renewable energy technologies. This practical knowledge will be integrated into their science, math, and agricultural classes. This project is a partnership with Outland Renewable Energy (a wind services company), Granite Falls Energy ethanol plant, and Fagan Engineering (specialists in biofuel plant design), the Southwest/West Central Service and MN Valley Cooperatives, the local community college and university, and other community organizations.</p>	<p>AMOUNT: \$118,222</p> <p>FUNDING AREA:</p> <p>Teacher development</p>
<p>INDUSTRY PARTNERS</p> <ul style="list-style-type: none"> Green Lyfe Applied Engineering & Design West Central Builders Association Willmar Electric Service <p>OTHER KEY PARTNERS</p> <p>Ridgewater College, Central MN Workforce Investment Board, Kandiyohi Economic Development Commission, Willmar Area Chamber of Commerce</p>	<p>In Willmar, students at Ridgewater College, experienced construction workers, and the general public will be educated in renewable and sustainable technologies through the construction of a LEED-certified home using renewable and sustainable technologies. (The Leadership in Energy and Environmental Design [LEED] Green Building Rating System provides standards for environmentally sustainable construction.) This is sponsored by a group of local architects (Green Lyfe), the carpentry and electricians program at Ridgewater College, and other industry and community partners.</p>	<p>AMOUNT: \$80,000</p> <p>FUNDING AREA:</p> <p>Conservation</p> <p>Career awareness</p> <p>Skills training</p>
<p>INDUSTRY PARTNERS</p> <ul style="list-style-type: none"> Heron Lake Bio Energy Archer Daniels Midland Granite Falls Energy NovaTech Process Solutions POET Biorefining Southern MN Beet Sugar Cooperative <p>OTHER KEY PARTNERS</p> <p>MN West Community & Technical College, Central MN Jobs & Training, Southwest MN State University, SW Initiative Foundation, SW MN FIRST Collaborative, SW MN Workforce Council</p>	<p>Throughout the state, workers from renewable energy manufacturers will be trained using an ethanol process simulator (from NovaTech Process Solutions) that provides the experience of operating an ethanol facility, along with production operation and lab training. Other levels of the program deliver supervisory management training and company board of director leadership training.</p>	<p>AMOUNT: \$297,500</p> <p>FUNDING AREA:</p> <p>Curriculum development</p> <p>Skills training</p>
<p>INDUSTRY PARTNERS</p> <ul style="list-style-type: none"> Keoh Properties <p>OTHER KEY PARTNERS</p> <p>CURE, City of Montevideo, Habitat for Humanity, Montevideo High School, SW MN Private Industry Council</p>	<p>In Montevideo, high school students and contractors are being trained to construct an energy-efficient, low-income home. The home will include active and passive solar design features, ground source heat, a specially insulated shell and high-impact low-maintenance exterior, a solar hot water system, and energy efficient windows. This is a partnership with Habitat for Humanity, CURE (Clean Up the River Environment) and other community organizations.</p>	<p>AMOUNT: \$80,000</p> <p>FUNDING AREA:</p> <p>Conservation</p> <p>Career awareness</p>
<p>INDUSTRY PARTNERS</p> <ul style="list-style-type: none"> Lake Region Electric Cooperative Otter Tail Power Company <p>OTHER KEY PARTNERS</p> <p>Lakes Country Service Cooperative, Alexandria Technical College, Cisco Academy Training Center, Concordia College, "Dream It. Do It." Campaign, MN State Community & Technical College, Moorhead State University, Rural MN CEP</p>	<p>In a nine-county region in west central Minnesota, K-12 teachers are having hands-on experiences with renewable energy manufacturing and agri-bioscience industries. Each teacher completes an internship provided through a partnering renewable energy business. The training is provided by the Lakes Country Service Cooperative (LCSC) Science, Technology, Engineering and Mathematics (STEM) Project.</p>	<p>AMOUNT: \$168,774</p> <p>FUNDING AREA:</p> <p>Teacher development</p> <p>Curriculum development</p>

PARTNERS	PROJECT DESCRIPTION	GRANT AMOUNT & FUNDING AREA
<p>INDUSTRY PARTNERS</p> <ul style="list-style-type: none"> • MinnWest Technology Campus • Epiropix • Nova-Tech Engineering <p>OTHER KEY PARTNERS</p> <p>Central MN Jobs & Training, Kandiyohi and Willmar Economic Development Authority, Ridgewater College, St. Cloud State University, University of MN, Willmar Workforce Center</p>	<p>In the Willmar area, Nova-Tech Engineering and Epiropix are providing hands-on experience through internships in agri-based alternative energy and bioscience. Local K-12 science teachers are also benefiting from a new mobile science education lab sponsored by this grant. This semi-truck trailer is outfitted with the basics of science education: electricity, distilled water, freezers and refrigerators, scales, microscopes, and computer systems.</p>	<p>AMOUNT: \$202,500</p> <p>FUNDING AREA:</p> <ul style="list-style-type: none"> Internships Teacher development Skills training
<p>INDUSTRY PARTNERS</p> <ul style="list-style-type: none"> • MTM Performance Solutions • BioFuel Energy • Southern MN Beet Sugar Cooperative <p>OTHER KEY PARTNERS</p> <p>MN West Community & Technical College, MN Department of Employment & Economic Development, SW MN Private Industry Council</p>	<p>In Renville and Fairmont, managers at local renewable energy companies are receiving leadership training from a Willmar-based organizational consulting company in coordination with the local community college. This training is for new and potential supervisors at the BioFuel Energy ethanol plant and Southern MN Beet Sugar Cooperative factory.</p>	<p>AMOUNT: \$60,000</p> <p>FUNDING AREA:</p> <ul style="list-style-type: none"> Leadership Training
<p>INDUSTRY PARTNERS</p> <ul style="list-style-type: none"> • Nova-Tech Engineering • HGA Architects and Engineers <p>OTHER KEY PARTNERS</p> <p>University of MN–Morris, Alexandria Technical College, MN West Community & Technical College, Rural MN CEP</p>	<p>At the University of Minnesota–Morris, architects and engineers worked with educational faculty to develop and implement a biomass gasification technology curriculum. They are now adding a new component in systems control of biomass gasifier units. Hands-on learning is provided using the University’s biomass gasification facility and local biomass sources, such as corn stover, switchgrass, municipal sewer waste, tires, and other trash. The curriculum will also be adapted for online delivery.</p>	<p>AMOUNT: \$259,258</p> <p>FUNDING AREA:</p> <ul style="list-style-type: none"> Entrepreneurship Curriculum development Skills training
<p>INDUSTRY PARTNERS</p> <ul style="list-style-type: none"> • Otter Tail Ag Enterprises <p>OTHER KEY PARTNERS</p> <p>MN State Community & Technical College, North Dakota State College of Science, Rural MN CEP</p>	<p>In the Fargo-Moorhead area, middle school and high school teachers will learn about bio-fermenters for ethanol production, photo-bioreactors for algae propagation, gas and liquid chromatography for biofuels analysis, and biodiesel from waste oil. High school students are also getting first-hand experience with alternative and renewable energy technologies through a partnership with the local community college, North Dakota State College of Science, and the Otter Tail Ag Enterprises ethanol plant.</p>	<p>AMOUNT: \$76,500</p> <p>FUNDING AREA:</p> <ul style="list-style-type: none"> Career awareness
<p>INDUSTRY PARTNERS</p> <ul style="list-style-type: none"> • Otter Tail Ag Enterprises • Bongards Creamery • Otter Tail Power Company <p>OTHER KEY PARTNERS</p> <p>MN State Community & Technical College, Rural MN CEP</p>	<p>In Otter Tail County, workers at three local businesses will be trained in maintenance, boiler operation, maintenance welding, and ethanol theory. This training will help meet the need continually expressed by local employers for skilled maintenance workers to meet production needs and to replace retiring workers.</p>	<p>AMOUNT: \$94,817</p> <p>FUNDING AREA:</p> <ul style="list-style-type: none"> Skills training
<p>INDUSTRY PARTNERS</p> <ul style="list-style-type: none"> • Otter Tail and Wadena County Residential Building Contractors <p>OTHER KEY PARTNERS</p> <p>Otter Tail–Wadena Community Action Council, MN Department of Commerce, Rural Renewable Energy Alliance, Rural MN CEP</p>	<p>In Otter Tail and Wadena Counties, contractors and weatherization program auditors are being trained to do solar heating analyses for homes and to complete solar air heating installations. The Otter Tail-Wadena Community Action Council provides home weatherization services to improve energy conservation for low-income residents.</p>	<p>AMOUNT: \$95,000</p> <p>FUNDING AREA:</p> <ul style="list-style-type: none"> Conservation Skills training

PARTNERS	PROJECT DESCRIPTION	GRANT AMOUNT & FUNDING AREA
<p>INDUSTRY PARTNERS</p> <ul style="list-style-type: none"> • Outland Renewable Energy <p>OTHER KEY PARTNERS</p> <p>MN West Community & Technical College, SW Private Industry Council</p>	<p>In Canby, current and future wind energy workers are learning about wind turbine gear maintenance and analysis and are getting hands-on training to supplement theoretical training through a partnership of Outland Renewable Energy (a wind services company) and the local community/technical college. In addition, tower-climbing safety techniques and use of safety equipment are being taught.</p>	<p>AMOUNT: \$104,000</p> <p>FUNDING AREA</p> <p>Skills training</p>
<p>INDUSTRY PARTNERS</p> <ul style="list-style-type: none"> • POET Biorefining • MN Soybean Processors <p>OTHER KEY PARTNERS</p> <p>Windom Education & Collaborative Center (WECC), Adult Basic Education, SW MN Workforce Council</p>	<p>In Cottonwood, Jackson, Martin, and Watonwan Counties, training is being provided for skills needed in the biorefining industry, such as boiler operation, welding, maintenance technology, and lean manufacturing. Employees of the biorefinery plant and the biodiesel plant are being offered skills upgrading and hands-on training. Potential workers are being trained through internships, hands-on experience, and technology classes. The Windom Education & Collaborative Center is coordinating this project which targets new immigrants.</p>	<p>AMOUNT: \$78,000</p> <p>FUNDING AREA</p> <p>Skills training</p>
<p>INDUSTRY PARTNERS</p> <ul style="list-style-type: none"> • Solar Skies <p>OTHER KEY PARTNERS</p> <p>Alexandria Technical College, Century College, Rural MN CEP</p>	<p>In the Alexandria/Starbuck area, two colleges are working with solar thermal manufacturer Solar Skies to develop solar thermal train-the-trainer programs that will produce new instructors and will provide community-based workshops on solar energy.</p>	<p>AMOUNT: \$170,060</p> <p>FUNDING AREA</p> <p>Curriculum development</p> <p>Skills training</p>
<p>INDUSTRY PARTNERS</p> <ul style="list-style-type: none"> • Southern MN Association of Food and Ethanol Employers (SMAFE) members • Ideation Consulting <p>OTHER KEY PARTNERS</p> <p>Alexandria Technical College, Biofuels Recruiting, South Central Workforce Council</p>	<p>In 11 southern Minnesota counties, managers at 20 area ethanol and agri-business companies, including Biofuel Energy Corporation, Minnesota Energy, and Heron Lake Bioenergy, are benefiting from industry-specific leadership development training provided by a local HR consulting agency. This training includes individual coaching sessions, customized leadership planning, and review of key leadership principles.</p>	<p>AMOUNT: \$85,000</p> <p>FUNDING AREA</p> <p>Leadership Training</p>
<p>INDUSTRY PARTNERS</p> <ul style="list-style-type: none"> • SoyMor Biodiesel <p>OTHER KEY PARTNERS</p> <p>Workforce Development, Inc., Riverland Community College, South Central Workforce Council, Southwest MN Private Industry Council</p>	<p>In 23 southern Minnesota counties, the Renewable Energy Skilled Worker Pipeline targets high school students, out-of-school youth and adults, and energy workers. Safety training, industrial maintenance skill development, and on-the-job training are being provided by local renewable energy businesses, community colleges, and workforce development agencies. This is a strengthening and expansion of the Energy Academies.</p>	<p>AMOUNT: \$95,000</p> <p>FUNDING AREA</p> <p>Skills training</p>
<p>INDUSTRY PARTNERS</p> <ul style="list-style-type: none"> • Tri-State Manufacturers Association • BTD Manufacturing • StoneL Corp. • 3M <p>OTHER KEY PARTNERS</p> <p>Alexandria Technical College, Lakes Country Service Co-op, MN State Community & Technical College, Rural MN CEP, 360 Manufacturing and Applied Engineering Center of Excellence (MnSCU), West Central Initiative</p>	<p>In 11 counties in west central Minnesota, job seekers and students will have access to a manufacturing career exploration and awareness program called Dream It! Do it! The goal is to increase awareness of 16-to 26-year-olds in advanced manufacturing needed to support renewable energy businesses. BTD Manufacturing, StoneL, the Tri-State Manufacturers Association, and 3M are industry partners along with the region's university and community and technical college.</p>	<p>AMOUNT: \$51,267</p> <p>FUNDING AREA</p> <p>Career awareness</p>

PARTNERS

INDUSTRY PARTNERS

- V-Tek
- Cambria
- Dotson Iron Castings
- MICO

OTHER KEY PARTNERS

South Central College, Fond du Lac Tribal & Community College, MN Center for Engineering and Manufacturing Excellence, South Central Workforce Council

PROJECT DESCRIPTION

In the Mankato area, South Central College (SCC) has developed and is delivering four core curriculum Mechatronics classes to workers in Minnesota's Shared Work Pilot Program. Five local businesses, at risk of laying off employees, can reduce employees' hours while they participate in Mechatronics classes. This was facilitated through a legislative change. The employees receive unemployment benefits for their reduced work hours, the employers save payroll costs, and employees learn valuable new skills. Mechatronics involves mechanics, electronics, computing, control engineering, and molecular engineering. In a second phase of this project, SCC is developing five additional classes and partnering with Fond du Lac Tribal & Community College to bring this training to northeastern Minnesota.

GRANT AMOUNT & FUNDING AREA

AMOUNT: \$339,939

FUNDING AREA:

Curriculum development

Skills training



Visit us at www.mnrem.org

This workforce solution was funded by a grant awarded under Workforce Innovation in Regional Economic Development (WIRED) as implemented by the U.S. Department of Labor's Employment and Training Administration. The solution was created by the grantee and does not necessarily reflect the official position of the U.S. Department of Labor. The Department of Labor makes no guarantees, warranties, or assurances of any kind, express or implied, with respect to such information, including any information on linked sites and including, but not limited to, accuracy of the information or its completeness, timeliness, usefulness, adequacy, continued availability, or ownership. This solution is copyrighted by the institution that created it. Internal use by an organization and/or personal use by an individual for non-commercial purposes is permissible. All other uses require the prior authorization of the copyright owner.

Visit us at www.mnrem.org

For more information:

Teresa Kittridge, Executive Director • teresa@mnrem.org

